

# REDTAG pro

An Introduction

## What does it do?

Redtag pro is a lockout/tagout administration software system that can be configured to manage your lockout/tagout program according to your existing policies.

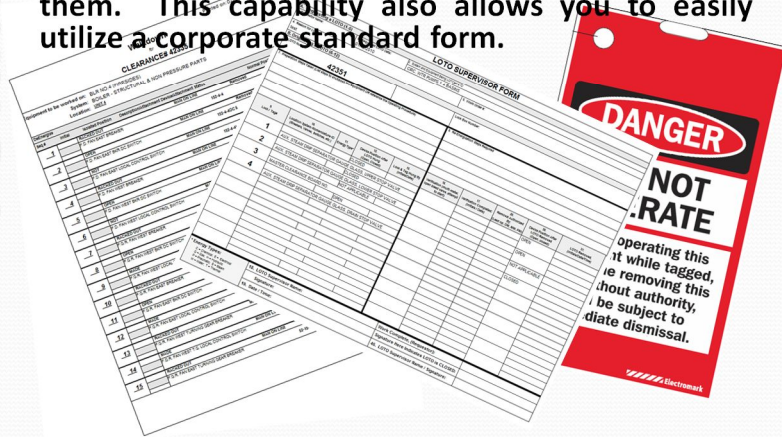
*For example:*

Redtag pro is a lockout/tagout administration software system that can be configured to manage your lockout/tagout program according to your existing policies. It is fully configurable, meaning that you don't have to change the way that you currently do your lockout/tagout administration. For example:

## What does it do? *continued*

# FORMS

You can design all the forms that you use in your LOTO procedures yourself. If you have forms that you already use and would like to continue using them then you can, or you can totally redesign them. This capability also allows you to easily utilize a corporate standard form.

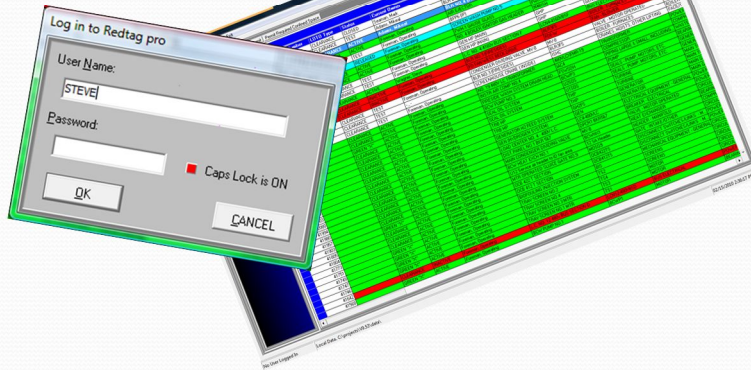


Forms...You can design all the forms that you use in your LOTO procedures yourself. If you have forms that you already use and would like to continue using them then you can, or you can totally redesign them. This capability also allows you to easily utilize a corporate standard form. Having a fully integrated forms designer in the program allows you, the user, to easily and quickly make forms modifications and be able to use the modified form immediately. Any form that you use in your existing LOTO program can be designed in Redtag pro, and be available for printing at any time.

## What does it do? *continued*

# SECURITY

Security is set up by user-name/password. Your Redtag pro administrator will assign you permissions to access only those areas of the program that you need to in order to perform your job.



Security is set up by user-name/password. Your Redtag pro administrator will assign you permissions to access only those areas of the program that you need to in order to perform your job. Users that have been set up as Redtag pro administrators will have full access to the program and be able to configure it to comply with your existing safety policies. Users that are not administrators can be set up to utilize only those portions of the program that they need to...for example, control room operators can be given permissions that will allow them to issue LOTO procedures, but none of the administrative functions; maintenance personnel can be given permissions to be able to issue or request LOTO procedures, but cannot do anything else until operations reviews them...and etcetera.

What does it do? *continued*

**PERMITS**

All aspects of your lockout/tagout policies can be managed, including permits such as Confined Space, Hot Work, etc. Permits are user defined so you can create any permit type that you need.



All aspects of your lockout/tagout policies can be managed, including permits such as Confined Space, Hot Work, etc. Permits are user defined so you can create any permit type that you need. When you set up your permits, questions can be defined with default answers that need to be answered when you issue the permit. Your permit forms can be created in the forms designer. Permits can be issued by themselves or linked to LOTO procedures. Safety analysis forms can be designed to comply with your JSA's...and etcetera.



What does it do? *continued*

**ATTACHMENTS**

Redtag pro can track any number of 'user defined' *attachment devices* such as Tags or locking devices. For example; you can use red 'danger tags' and yellow 'caution tags', blue 'information' tags, etc.; as well as pad locks, or whatever, and have Redtag pro manage these devices. Each device can have its own form and unique information printed on them by using the forms designer to design their tag form.

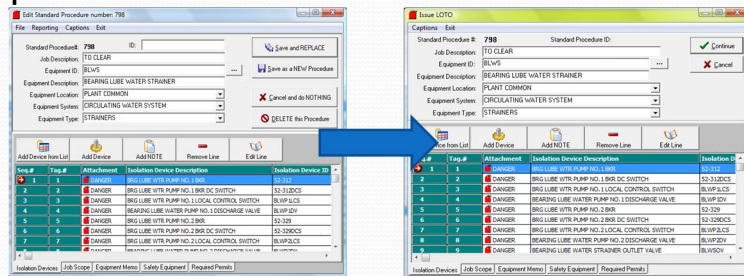


Redtag pro can track any number of 'user defined' *attachment devices* such as Tags or locking devices. For example; you can use red 'danger tags' and yellow 'caution tags', blue 'information' tags, etc.; as well as pad locks, or whatever, and have Redtag pro manage these devices. Each device can have its own form and unique information printed on them by using the forms designer to design the tag form.

# STANDARD LOTO

## What does it do? *continued*

Redtag pro maintains a database of user defined standardized lockout/procedures. When you issue a LOTO procedure, you can use the standard procedures 'as is' or modify them as you see fit if you have the permissions to do so. Any modification to the standard procedure while you are issuing a LOTO procedure will not alter the original standard procedure.



Redtag pro maintains a database of user defined standardized lockout/procedures. When you issue a LOTO procedure, you can use the standard procedures 'as is' or modify them as you see fit if you have the permissions to do so. Any modification to the standard procedure while you are issuing a LOTO procedure will not alter the original standard procedure. If a LOTO procedure is issued manually, it can quickly and easily be saved as a standard procedure so that you can issue it again by simply selecting it from the list of standard procedures.

What does it do? *continued*

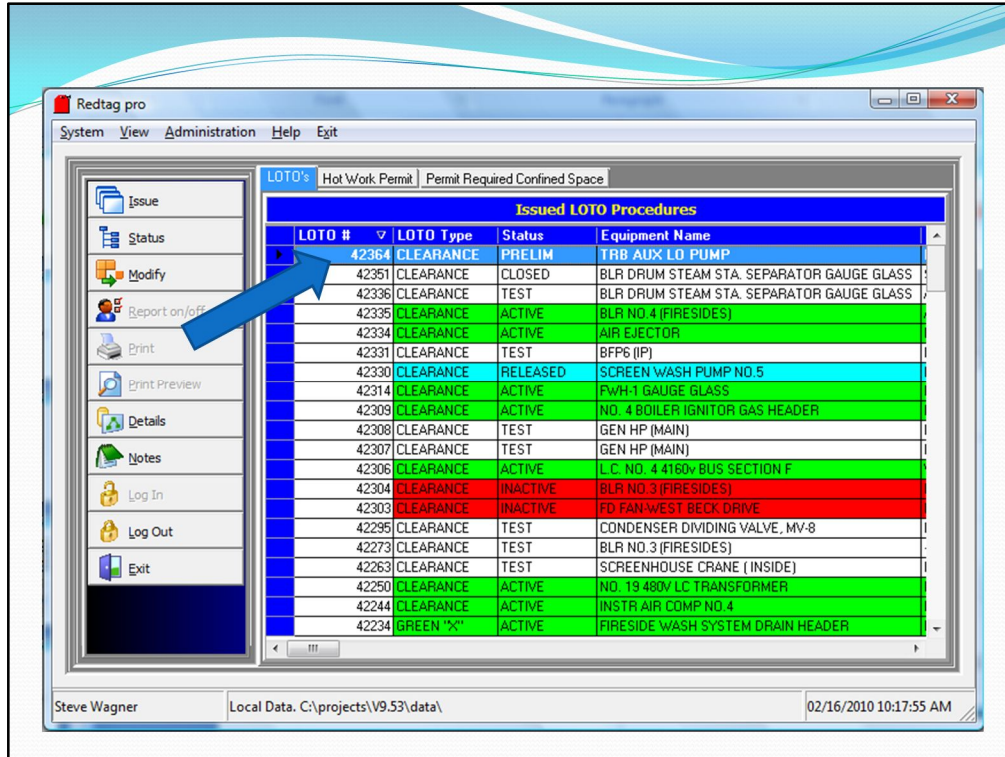
**HISTORY**

Redtag pro maintains a complete history or audit trail for your procedures. You can quickly see everything that has been done to a LOTO procedure since it was issued.

The image displays two overlapping screenshots from the Redtag Pro software. The left screenshot shows the 'CLEARANCE #4130 View' window, which includes fields for LOTO Number, Equipment Description, LOTO Status, and a list of activities with columns for Date, User, and Status. The right screenshot shows the 'CLEARANCE #4130 History' window, which provides a detailed log of actions such as 'Assigned to OPERATOR', 'Run Permits', and 'CANCELED', along with the names of the operators involved.

Redtag pro maintains a complete history or audit trail for your procedures. You can quickly see everything that has been done to a LOTO procedure since it was issued.





It all begins here...at the main window of Redtag pro. Start by clicking the login button and logging in with your user name and password. Your user-name and password determine what you can and cannot do while in Redtag pro.

The grid at the main window of Redtag pro shows all of the LOTO procedures and PERMITS that have been issued, and have not been completed.

You can issue a new LOTO procedure by clicking on the ISSUE button. Then, at the next window, select from the list of LOTO procedures the one that you wish to use.

At the next window, look the procedure over for completeness, then click the CONTINUE button to finish issuing the procedure.

After entering some final information, you will be returned to the main window where you can now see your newly issued LOTO procedure. Its that simple!



This completes the introduction to Redtag pro...

Now, continue on with the other lessons in the course to get an even greater understanding on the use of Redtag pro.